

Ovingdean Hall News

Winter 2023



2012-2022

Ovingdean Hall Foundation

PROVIDING OPPORTUNITIES
FOR DEAF CHILDREN AND
YOUNG PEOPLE

Understanding glue ear

We are supporting Glue Ear Together (GET), a fantastic new organisation that provides families and professionals with practical information about glue ear, a temporary hearing loss that affects many young children.

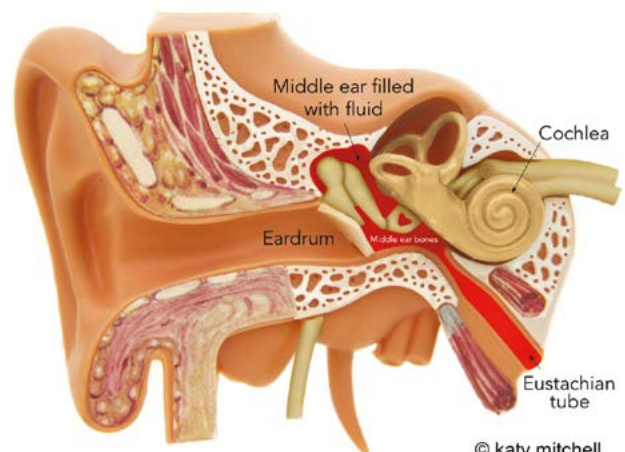


Glue ear occurs when there is a build-up of fluid in the middle ear. The fluid reduces how effectively the tiny middle ear bones transfer sound vibrations from the eardrum to the inner ear by preventing them from moving freely. This dampening of the sound waves results in a conductive hearing loss.

GET was co-founded this year by Jen Royds, the mother of a child with glue ear, and Katy Mitchell, a Qualified Teacher of the Deaf and Early Years specialist who also works for our partner charity Ewing Foundation.

We have funded GET's new website, enabling Jen and Katy to share information on the causes and symptoms of glue ear, together with details of interventions, with visitors from across the globe.

The website launch has coincided with the release of updated guidance on the condition from the National Institute for Health and Care Excellence (NICE)



© katy mitchell

A diagram of the ear - middle ear fluid is highlighted in red

(available at www.nice.org.uk/guidance/ng233), and both GET and Katy's new booklet about hearing loss *Hearing to Succeed and Achieve* are signposted by NICE as sources of further information.

'An awareness of the very simple steps that can be taken to help a child to hear will make a huge difference in enabling young children with glue ear to succeed and achieve,' said Jen and Katy.

Visit Glue Ear Together here:

www.glueearttogether.org.uk

You can read Katy's guide at www.ewing-foundation.org.uk/resources/hearing-to-succeed-and-achieve

Please do let us know if you would prefer a copy in the post instead.



Replicas of the tiny bones in the middle ear

© katy mitchell

Bringing theatre to life

We are supporting a project to involve deaf young people in making theatre more accessible.



Pilot is a leading national touring company specialising

in creating theatre for, by and with children and young people. Over the last year, Pilot have delivered eight workshops to 99 deaf young people at four schools/ settings in the Midlands and North of England.

'In the workshops, we introduced the themes, stories and key characters to the students before they attended the performances, as well as engaging them in drama games and activities,' said Pilot's Associate Director, Oli. Pilot also provided free online resources, including video interviews with cast members and filmed extracts of the production, which the teachers and students could revisit at any time to reinforce learning and vocabulary. Pilot also benefited from the input of Education Advisors at our partner charity Ewing

Foundation who helped identify participating schools, and offered advice on making the theatre experience more inclusive.

The students all received free tickets to see captioned and BSL-interpreted performances of Pilot's productions of *Noughts and Crosses* or *Run, Rebel* at their local theatre. Pilot returned to schools after the performance to seek students' views about the production and its accessibility.

For many of the young people, this was their first trip to a theatre, and feedback has been extremely positive.

'All students loved the experience of visiting the theatre and

watching the full story unfold in front of them,' one teacher said, *'Many students reported finding the captioning useful to enable them to follow the fast-paced show more easily.'*

Another teacher added that, *'Pilot Theatre provided a brilliant opportunity for the deaf pupils to access an expressive workshop bringing them out of their comfort zones and developing their interpersonal skills and confidence levels positively.'*

We look forward to supporting Pilot as they continue their work with deaf young people in 2024.



Noughts and Crosses
(photo taken by Robert Day)



Run, Rebel
(photo by Pamela Raith Photography)

A HUGE thank you to all of our friends for funding these important projects for deaf children and young people.

If you would like to help our work, please can you donate online at www.ovingdeanhall.org.uk/support-us or please send your cheque or CAF voucher (payable to Ovingdean Hall Foundation) to the address below.

Thank you very much!

Ovingdean Hall Foundation
15 Great College Street
London
SW1P 3RX

Tel: 01273 301929
Tel / Text: 07778 599939
Email: info@ovingdeanhall.org.uk
Web: www.ovingdeanhall.org.uk
Registered charity number: 1052478

